

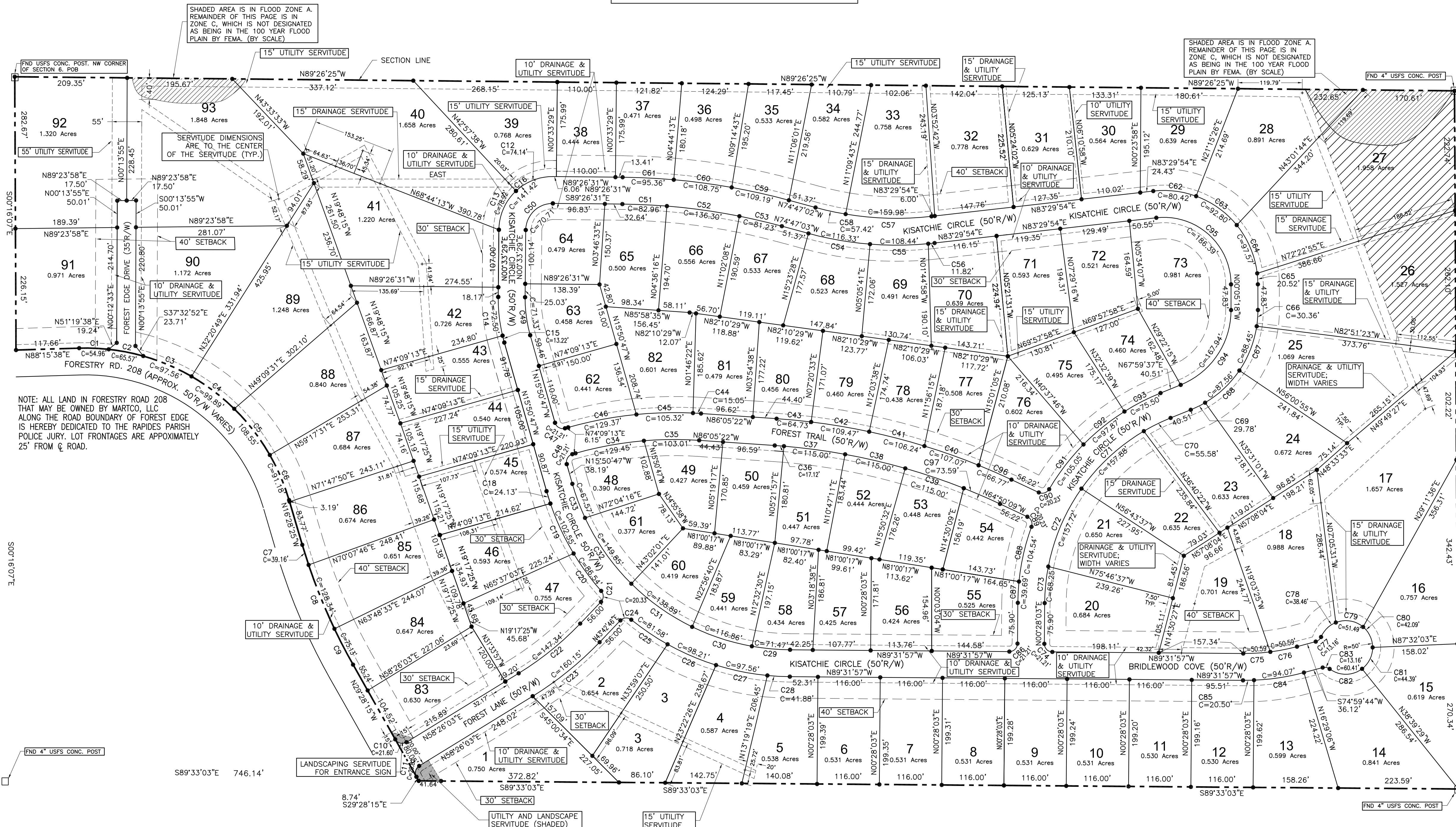
FOREST EDGE

LOCATED IN THE NORTHWEST QUARTER OF SECTION 6, TOWNSHIP 2 NORTH, RANGE 1 WEST,
WOODWORTH, LOUISIANA
LOTS 1-93

NOTES:

1. BASIS OF BEARINGS: STATE PLANE NAD 83
2. CURVE CHORDS ARE SHOWN ON THE PLAT. CURVE TABLES ARE FOUND ON PAGE 6.
3. ALL CORNERS ARE MARKED WITH SET 1/2" IRON RODS UNLESS OTHERWISE SHOWN.
4. WHEN SERVITUDES STRADDLE PROPERTY LINES, THEY ARE EVENLY DIVIDED BETWEEN THE LOTS.
5. DRAIN MEANDERS THE REAR OF LOTS 83-89 AND 40-47. DO NOT OBSTRUCT. WETLANDS MAY EXIST NORTH OF LOTS 45 AND 85 ALL THE WAY TO TIMBERLAKE SUBDIVISION.
6. A LARGE PORTION OF THE CROSS HATCHED LAND EAST OF THE UTILITY SERVITUDE IN LOTS 26, 27 AND 28 IS A WETLAND. PURPOSE OF CROSS HATCHING IS TO SHOW GENERAL AREA.

TIMBERLAKE SUBDIVISION



NOTE:
THE CHORD REFERENCES ON THIS SHEET ARE SHOWN AS "C=XX.XX."
FOR EXAMPLE, C=50.20' MEANS THAT THE CHORD LENGTH IS 50.20'.

CURVE TABLE

CURVE	RADIUS	ARC LENGTH	CHORD LENGTH	CHORD BEARING
C1	395.00'	55.00'	54.96'	S87°45'01"E
C2	395.00'	65.64'	65.57'	S79°00'01"E
C3	395.00'	97.81'	97.56'	S67°08'45"E
C4	395.00'	100.16'	99.89'	S52°47'18"E
C5	395.00'	108.90'	108.55'	S37°37'35"E
C6	395.00'	91.38'	91.18'	S23°06'04"E
C7	1070.01'	39.16'	39.16'	S17°31'20"E
C8	1070.01'	128.44'	128.34'	S12°30'32"E
C9	1070.01'	75.15'	75.13'	S27°27'32"E
C10	15.00'	24.11'	21.60'	S75°31'06"E
C11	15.00'	23.01'	20.82'	N14°28'54"E
C12	100.00'	75.95'	74.14'	S68°47'56"W
C13	100.00'	81.13'	78.92'	S23°47'56"W
C14	300.00'	72.67'	72.50'	S06°22'54"E
C15	300.00'	13.22'	13.22'	S14°35'02"E
C16	100.00'	157.08'	141.42'	N45°33'29"E
C17	300.00'	72.67'	72.50'	S06°22'54"E
C18	475.00'	24.14'	24.13'	S17°18'07"E
C19	475.00'	102.75'	102.55'	S24°57'16"E
C20	475.00'	86.66'	86.54'	S36°22'41"E
C21	15.00'	22.34'	20.33'	S01°03'14"W
C22	575.00'	147.74'	147.74'	S11°34'24"W
C23	625.00'	160.59'	160.15'	S11°04'24"W
C24	15.00'	22.34'	20.33'	N66°22'17"E
C25	475.00'	81.68'	81.58'	S55°53'46"E
C26	475.00'	98.39'	98.21'	S66°45'23"E
C27	475.00'	97.73'	97.56'	S78°35'05"E
C28	475.00'	41.90'	41.88'	S87°00'20"E
C29	425.00'	71.55'	71.47'	N84°42'33"W
C30	425.00'	117.23'	116.88'	S11°59'02"W
C31	425.00'	139.52'	138.89'	S13°58'23"E
C32	425.00'	150.63'	149.85'	S35°07'09"W
C33	425.00'	67.64'	67.57'	N20°24'21"W
C34	675.00'	129.64'	129.45'	N79°39'21"E
C35	675.00'	103.11'	103.01'	N89°32'04"E
C36	1175.01'	17.12'	17.12'	S85°40'19"E
C37	1175.01'	115.05'	115.00'	S62°26'59"E
C38	1175.01'	115.05'	115.00'	S76°50'23"E
C39	1175.01'	115.05'	115.00'	S71°13'48"E
C40	1225.01'	107.10'	107.07'	N70°27'51"W
C41	1225.01'	106.27'	106.24'	N75°27'15"W
C42	1225.01'	109.51'	109.47'	N80°30'01"W
C43	1225.01'	64.74'	64.73'	N84°34'31"W
C44	725.00'	15.05'	15.05'	S86°41'03"W
C45	725.00'	105.41'	105.33'	S88°33'21"W
C46	725.00'	129.54'	129.37'	S79°16'20"W
C47	15.00'	23.56'	21.21'	N60°50'47"W
C48	15.00'	23.56'	21.21'	N29°09'13"E
C49	250.00'	71.58'	71.53'	N07°38'39"W
C50	50.00'	78.54'	70.71'	N45°33'29"E
C51	1175.01'	82.98'	82.96'	S87°25'08"E
C52	1175.01'	136.37'	136.30'	S82°04'15"E
C53	1175.01'	81.22'	81.22'	S76°45'15"E
C54	625.00'	116.53'	116.33'	S80°07'27"E
C55	625.00'	108.58'	108.44'	N89°33'32"E
C56	625.00'	11.82'	11.82'	N84°02'25"E
C57	575.00'	160.50'	159.98'	N88°30'18"W
C58	575.00'	57.45'	57.42'	N77°38'46"W
C59	1225.01'	109.22'	109.19'	N72°20'18"W
C60	1225.01'	108.79'	108.75'	N82°56'17"W
C61	1225.01'	95.38'	95.36'	N87°12'41"W
C62	175.00'	81.14'	80.42'	S83°13'08"E
C63	175.00'	93.92'	92.80'	S54°33'39"E
C64	175.00'	98.88'	97.57'	S22°59'55"E
C65	175.00'	20.53'	20.52'	S02°27'00"E
C66	200.00'	30.39'	30.36'	S04°15'51"W
C67	200.00'	89.18'	89.45'	S21°23'28"W
C68	200.00'	88.28'	87.56'	S46°48'56"W
C69	200.00'	29.81'	29.78'	S63°43'27"W
C70	375.00'	55.63'	55.58'	S63°44'37"W
C71	375.00'	159.07'	157.88'	S47°20'28"W
C72	375.00'	158.91'	157.72'	S23°02'57"W
C73	375.00'	68.34'	68.25'	S05°41'19"W
C74	15.00'	23.56'	21.21'	S44°31'57"E
C75	375.00'	50.63'	50.59'	N86°55'59"W
C76	375.00'	50.63'	50.59'	N78°51'49"E
C77	15.00'	13.62'	13.16'	N48°59'08"E
C78	50.00'	39.48'	38.46'	N45°35'40"E
C79	50.00'	54.09'	51.49'	S80°47'41"E
C80	50.00'	43.44'	42.09'	S24°54'44"E
C81	50.00'	45.99'	44.39'	S26°19'49"W
C82	50.00'	64.87'	60.41'	S89°50'57"W
C83	15.00'	13.62'	13.16'	N78°59'40"W
C84	425.00'	94.26'	94.07'	S81°20'59"W
C85	425.00'	20.50'	20.50'	S89°05'08"W
C86	15.00'	23.56'	21.21'	N45°28'03"E
C87	425.00'	39.70'	39.69'	N03°08'37"E
C88	425.00'	104.80'	104.54'	N12°53'02"E
C89	15.00'	22.20'	20.23'	N22°26'38"W
C90	425.00'	20.20'	20.20'	N72°48'19"E
C91	425.00'	105.32'	105.05'	N37°28'45"E
C92	425.00'	98.08'	97.87'	N51°11'24"E
C93	425.00'	75.60'	75.50'	N62°53'51"E
C94	150.00'	178.24'	167.94'	N33°57'10"E
C95	125.00'	210.34'	186.39'	N48°17'42"W
C96	1225.01'	66.78'	66.77'	N66°23'52"W
C97	1175.01'	73.60'	73.59'	N66°37'50"W